

Giving Directions (2)

1 Look around you in class now. Who is next to you? Who is opposite you? Complete sentences below where possible and answer your teacher's questions.

_____ is (sitting) next to me.

_____ is (sitting) opposite me.

_____ is (sitting) behind) me.

2 Cross out any of the following expressions which are not prepositions of place.

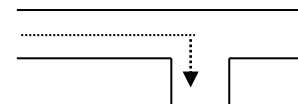
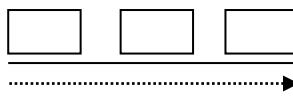
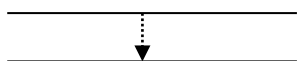
- | | | | | |
|----------|----------|---------|--------|--------|
| opposite | bus stop | next to | future | eleven |
| tell | block | between | place | past |

3 Look at the pictures below. Write the appropriate instruction from the box under the picture.

• GO THREE BLOCKS

• CROSS THE STREET

• TURN RIGHT

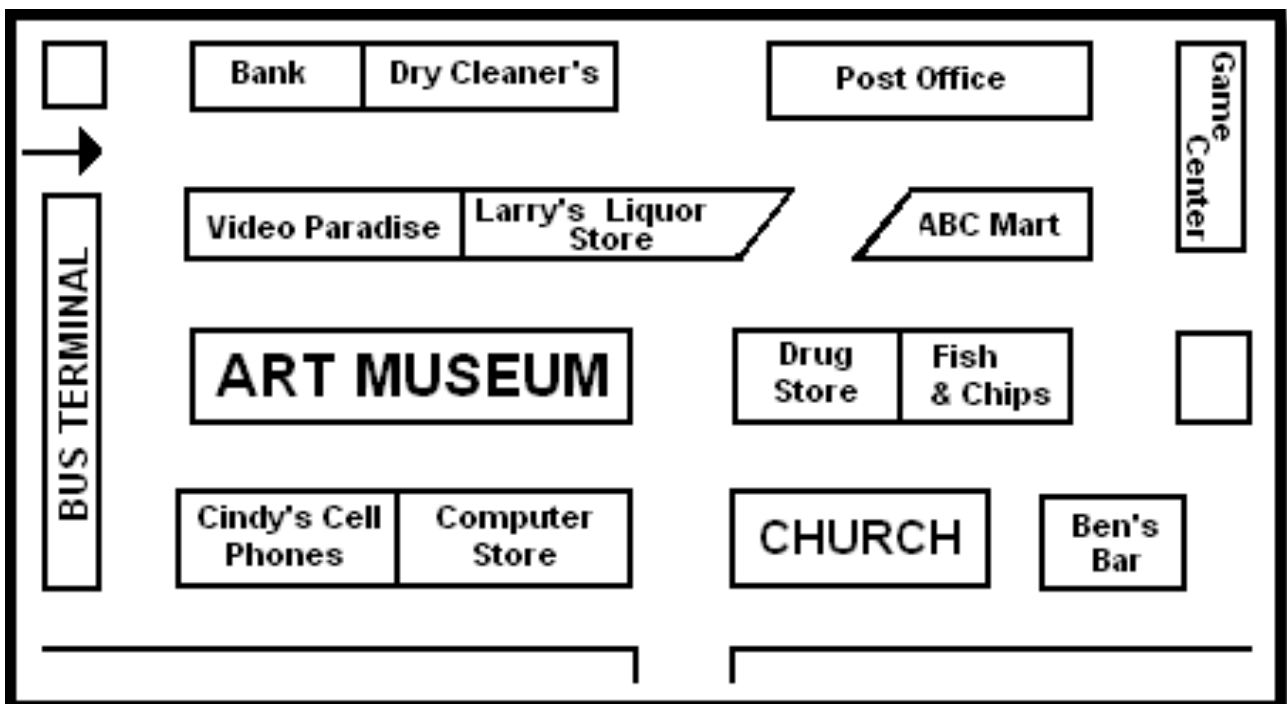
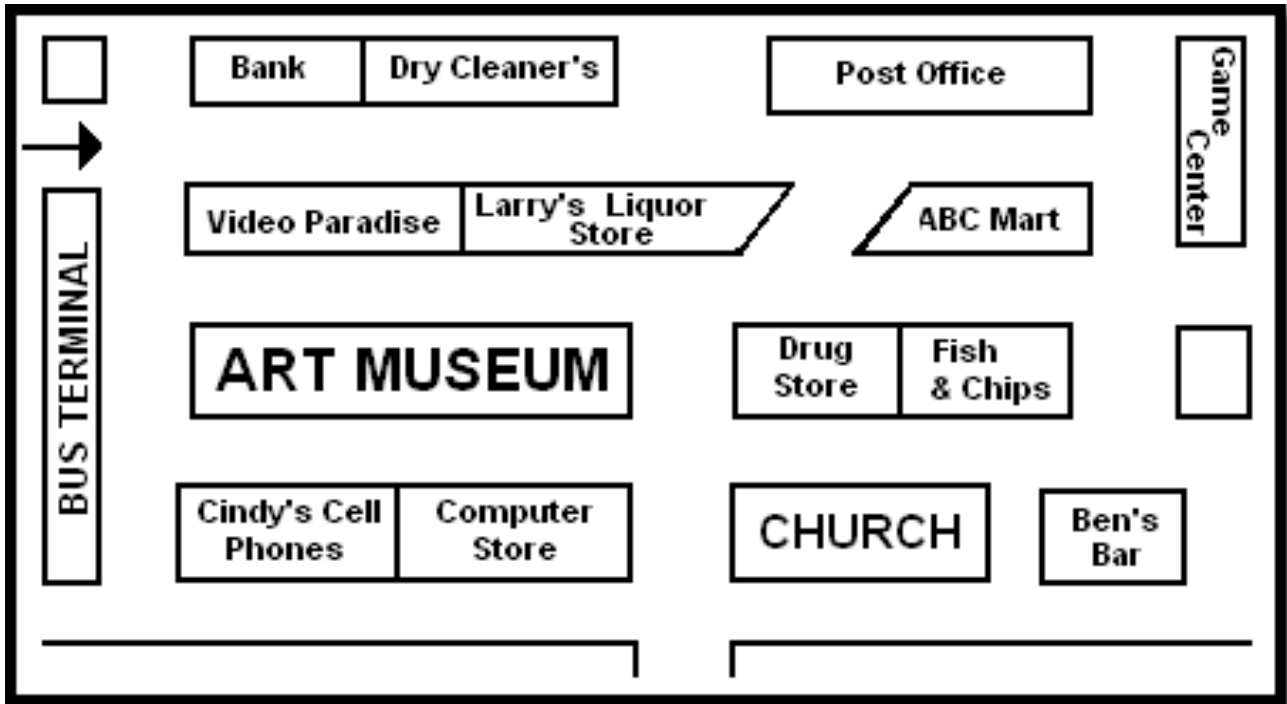


4 Test yourself! Your teacher will give you a map. Complete correct sentences about the location of shops and services below. Check with a partner. You are at 'X'

e.g. The computer store is next to Cindy's Cell Phones.

- The bank is _____ the dry cleaner's.
- Video Paradise is _____ the bank.
- To get to the art museum, turn _____ and walk _____ block.
- The museum will be on your _____.
- To get to the church, turn _____ and walk _____ blocks then turn _____.
- The church is on the _____ block.

Giving Directions (2): Maps



Giving Directions (2): Teaching Notes

Target Structure:	Giving directions
Vocabulary:	Shop names, other locations, directions
Level:	Elementary (there's also a higher level version)
Time:	20 minutes+
Preparation:	Photocopy worksheet and map, one per student

Suggested Teaching Method.

This handout should act as review for basic phrases describing location, as well as simple directions. You may need to review these before using the handout in class.

- 1 You may want to review certain prepositions of place (behind, in front of etc.) using realia distributing this worksheet. Pens placed on / under / next to a desk usually does the trick.

Hand out the worksheet first. Ask students to quickly complete the sentences as true for themselves and chose three or four students to answer at random to read out answers.

- 2 Set a short time limit for students to work in pairs on this activity. Check students understand the use of 'past' in this case.

- 3 Check directions vocabulary and then follow instructions on the sheet. Quickly check answers.

- 4 Distribute the one map to each student. They are exactly the same, but doubled to save photocopying and time. You'll need to cut / tear the sheet in half.

Students follow instructions and complete the sentences in pairs, again within a short time limit.

Check as a group and correct where necessary.

To extend this activity, get students to ask each other:

'Where is the _____' (type of shop) or 'Where is _____ (specific shop name)'

If you want to be more adventurous, consider drawing a map of the building where you are on the board, and ask questions from there.

Answers

2	opposite	bus stop	next to	future	eleven
	tell	block	between	place	past

Additional Ideas

'Directions' handout has more practice, but for higher levels.

For the latest information on new worksheets, please register for our newsletter.