

How do I get to the Hotel Grande?

1 Warm-up Work with a partner

- When did you last get lost? Where were you?



2 Conversation Read, and fill in the spaces.

Scene: Pam is looking for her hotel. She asks a stranger in the street for help.

Missing Words

- opposite
- take
- get

Pam: Excuse me!

Bob: Yes?

Pam: Do you know how to ¹..... to the Hotel Grande?

Bob: Yes - go down this road, and ²..... the first left...

Pam: The first left?

Bob: Yes. And go straight, past the gas station.

Pam: OK...

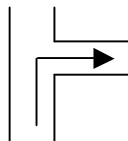
Bob: And it's on your left. It's ³..... a bank.

Pam: Got it! Thanks for your help.

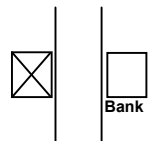
Bob: You're welcome.

3 Fill in the blanks

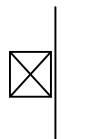
1) right.



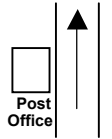
4) It's the bank.



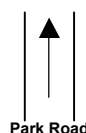
2) It's the left.



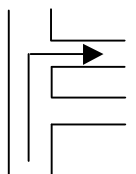
5) Go the post office.



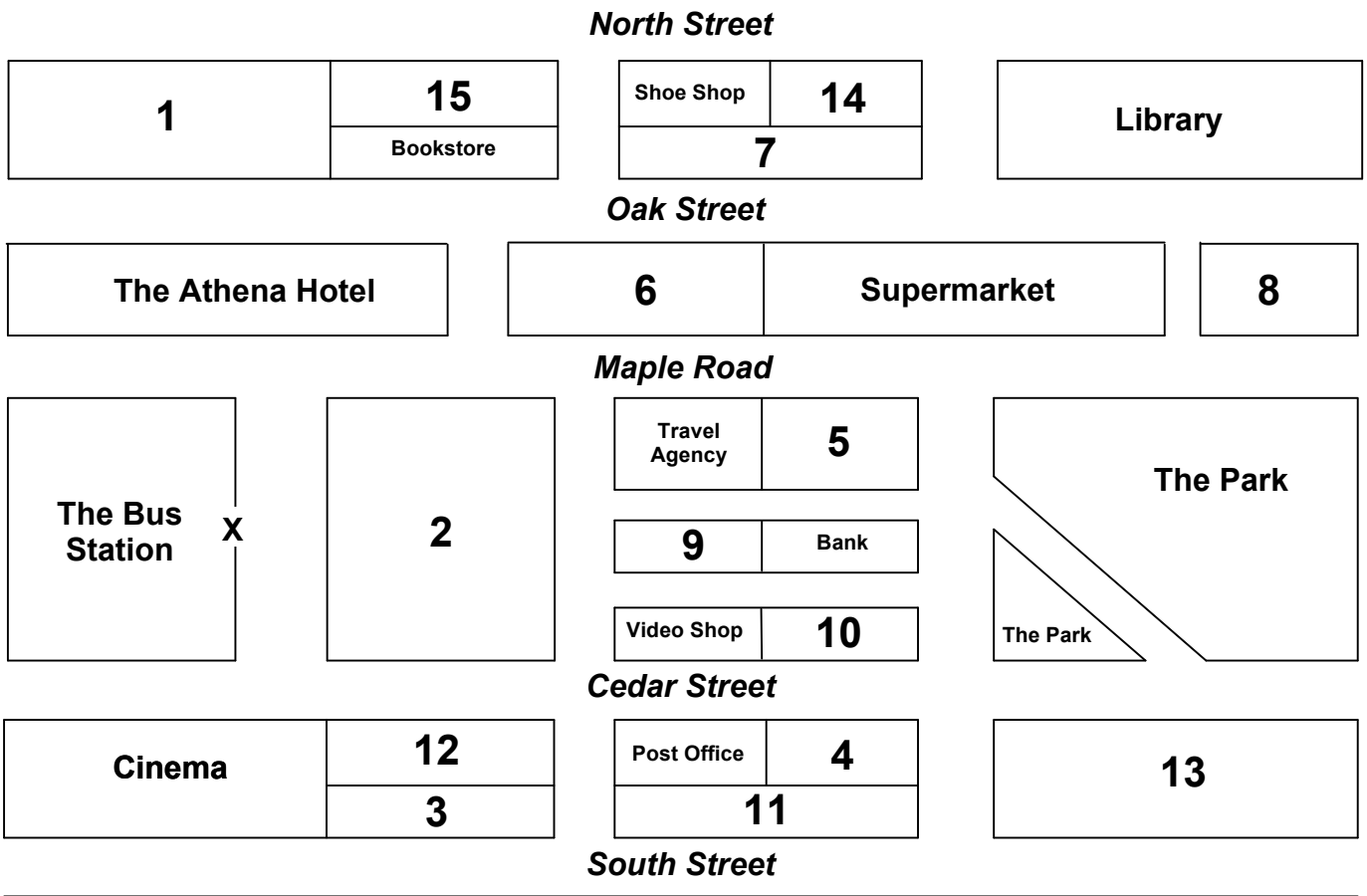
3) Go Park Road



6) right.



4 Understanding Directions Look at the map, and then answer the question below.



Question: Which location is the speaker giving directions to? (1-15)

Go out of the bus station and turn left. Take the next right. Go straight down Maple Street, and it's opposite the supermarket, next to a travel agency.

Answer: Number ____

5 Your Turn

- Work with a partner.
- Take turns, choosing a number from the map above. Explain to your partner how to get to the location.
- Begin like this: "Go out of the bus station...."
- Change roles regularly.

How do I get to the Hotel Grande?

Teaching Notes

Target Structure:	Directions
Vocabulary:	General
Level:	Elementary and above
Time:	30 minutes +
Preparation:	None

Suggested Teaching Method

Teaching directions is a great way of building your students' communication skills. There are five different exercises to help your students master the target language.

- ① Give one worksheet to each student. Students should discuss the questions in pairs, or small groups. Don't spend too long on this section – it could be extended on after the worksheet has been completed.
- ② Set the scene. Students should read the conversation silently, and fill in the missing words. Go through the answers. Students should then practice the conversation in pairs. Encourage eye contact during the reading.
- ③ Students can work in pairs. Go through the answers with the group at the end.
- ④ Give the students a moment to study the map. They should then read the question and direction information written underneath. Students can work in pairs.
- ⑤ Put students into new pairs. They should take turns giving directions, using the language studied in exercise three. Repeat the exercise several times, with students changing roles each time.

As an additional challenge for the students, you could do a few examples yourself at the end, speaking at a faster pace, and/or taking 'scenic routes' to particular locations.

Answer Key (Other answers may be possible.)

- ②
 1. get
 2. take
 3. opposite
- ③

<ol style="list-style-type: none"> 1. Turn right. 2. It's on the left. 3. Go up / down / along Park Road. 	<ol style="list-style-type: none"> 4. It's opposite the bank. 5. Go past the post office. 6. Take the second right.
--	--
- ④ Location #5